

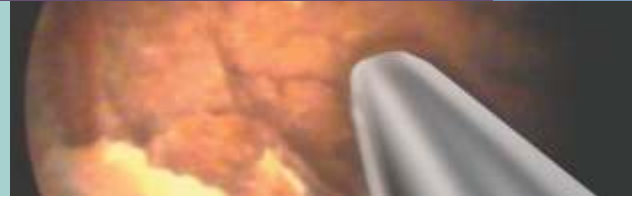
CALCULICLAST



Intracorporeal Contact Type
Lithotripsy System



CALCULICLAST



FEATURES

Extra power for stone fragmentation precise & minimum forward movement of the probe minimizes stone flying.

Power of the blast adjustable. Four preset frequencies of the blast.

Special accessories & probes for fragmentation of renal & bladder stones. Adaptors to connect the machine to central connection.

New Suction Cannula with Pinch Valve

INPUT VOLTAGE

230 Volts,

OUTPUT PRESSURE

4kg /cm²

AIRFLOW

30 liter/min.

TECHNICAL SPECIFICATIONS

Control Unit

Supply Voltage - 230 Volts A.c.

Working pressure - 1.8 to 4 kg/cm².

Maximum input pressure - Max. 6.0 Kg/sq.cm.

Pressure Source - Pressurised Oxygen / Compressed Air

Hand Piece

Dimensions - Dia. 24 Mm X 180 Mm.

Weight - 0.150 Gms.

Probes

0.8 mm ,1 mm ,1.2mm for ureteroscopy

1.5 mm Bladder Stones.

2 mm renal stones.



CALCULICLAST WORKSTATION

CALCULICLAST with oil less,noiseless compressor & powder coated trolley.

FEATURES

- Oil less, noiseless compressor
- Electrical cut off switch
- Mechanical safety valve
- Powder coated trolley with wheels

Maintenance Free Design.

INPUT VOLTAGE

230 Volts,

OUTPUT PRESSURE

4kg /cm²

AIRFLOW

30 liter/min.

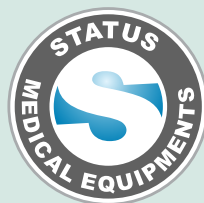


UROFLOWMETER

URODYNAMICS

WORKSTATION

HYDROMAT



STATUS MEDICAL EQUIPMENTS

M-9/A, Additional M.I.D.C. Satara 415004,
Maharashtra India

Phone 91-02162-240037, 240045,

Fax 91-02162-240743

e-mail statmedi@gmail.com

www.statmedi.com